

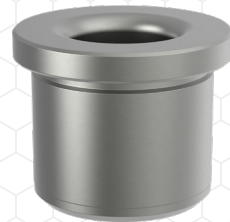
### Slotted Locator Bushings

- Slotted Locator Bushings can be used with many types of alignment pins and locating pins to align two holes without binding.
- Available for pin diameters from 1/8 to 1", including some number and letter sizes (5 to 25mm in metric).
- Many sizes are optionally available in hardened 440C stainless steel as well as Carbide.
- Headed and non-headed versions available in Carbide.
- Made in USA.



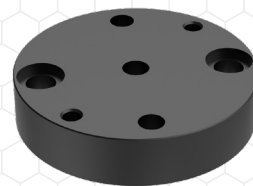
### Captive Locating Screws

- Use these Captive Locating Screws for locating and clamping or just clamping by selecting the appropriate screw length.
- Featuring a precision-ground body, these American-Made aerospace bushing's spring clip snaps into the body's radial groove when in a fully retractable position.
- Available in thread sizes from 1/4-20 to 1/2-13.
- Made in USA.



### ON-SIZE® Bushings

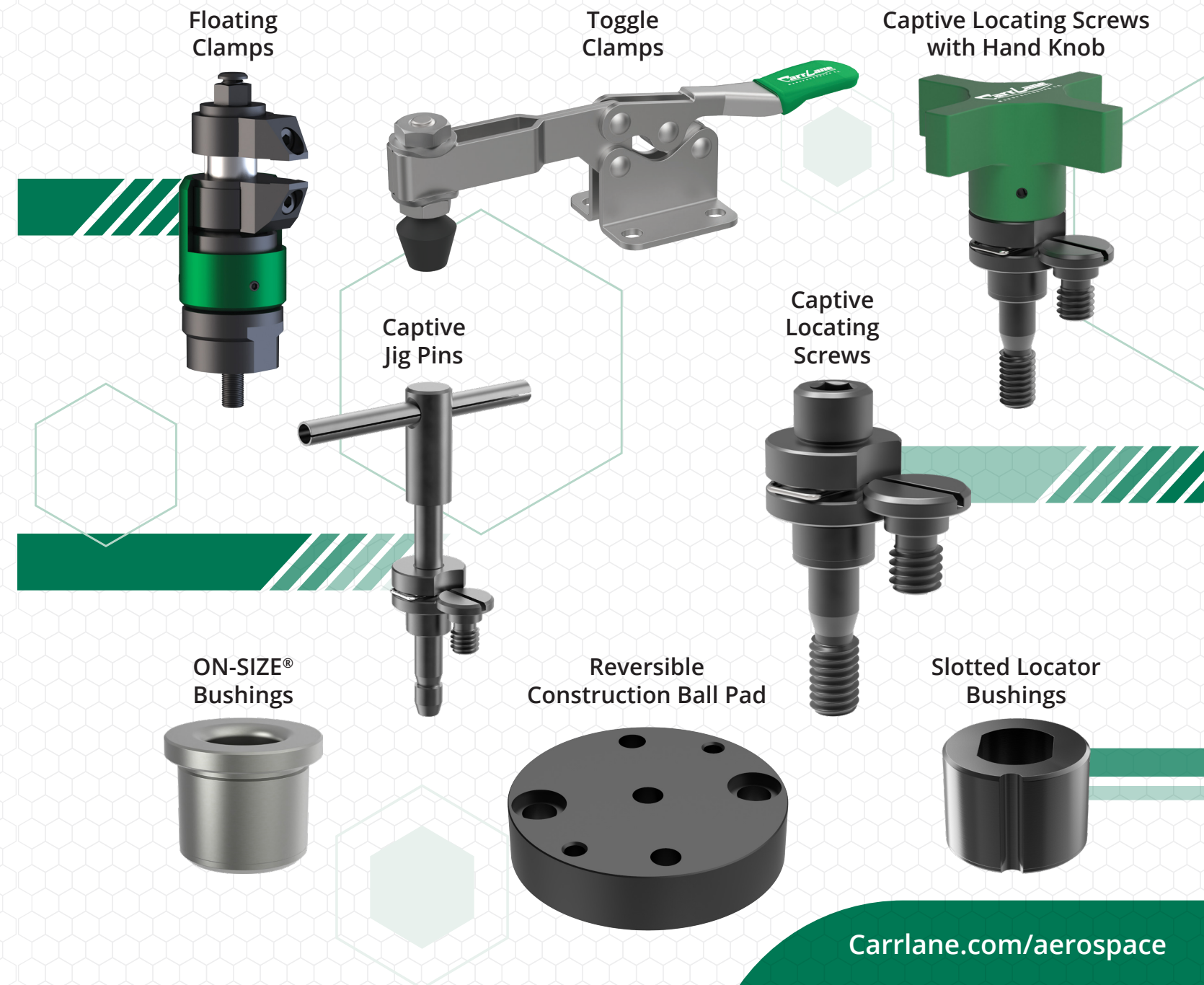
- Head & headless types available.
- ON-SIZE® Bushings are made from Invar 36, a 36% nickel-iron alloy that has an extremely low Coefficient of Thermal Expansion.
- Useful in high temperature applications up to 750°F (400°C), these products will maintain their size and accuracy even under heat-cool multiple cycles.

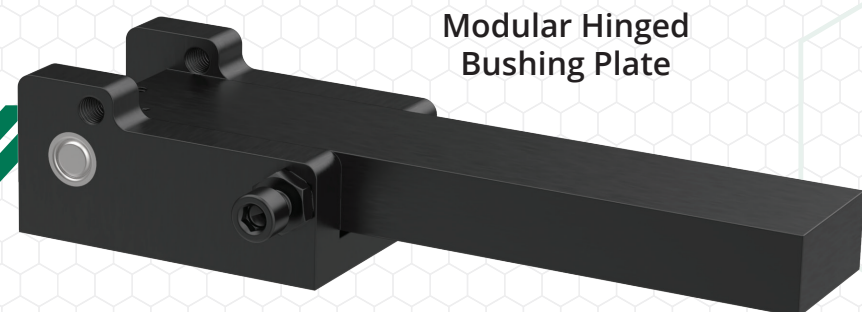


### Reversible Construction Ball Pad

- This precision reversible round pad can be flipped over in order to mirror a fixture (see application). These round pads should be fastened with two ultra-low-profile socket-head cap screws, then doweled in place to maintain accurate location. The Construction Ball can be secured by installing a #10-32 setscrew (not furnished) in the crosshole. Available in steel and stainless steel.
- Made in USA.

# The absolute source for Aerospace Tooling Components



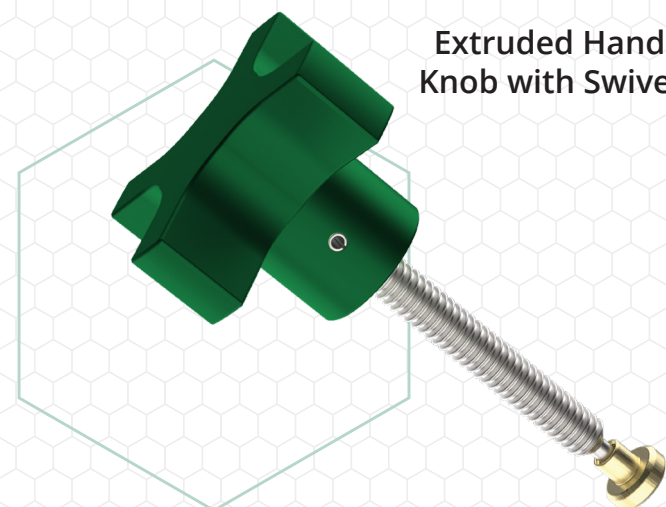


Modular Hinged Bushing Plate



## Floating Clamps

- Floating Clamps are position-flexible clamping devices. The top jaw and bottom jaw together provide a floating clamping point that adjusts to the workpiece before locking, to prevent deformation.
- These combination clamp/supports are often used in conjunction with primary locators and clamps, providing additional support points to reduce machining vibration.
- For custom applications, the standard upper clamping jaw supplied can be replaced by a special clamping jaw.



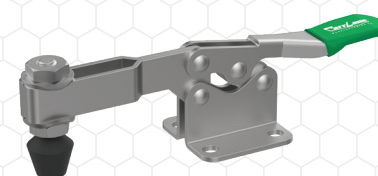
Extruded Hand Knob with Swivel



DropZero® Modular Zero-Point System

## DropZero® Modular Zero-Point System

- Our new DropZero® Modular Zero-Point System enables you to completely machine a workpiece in one setup, significantly reducing setup time and fixturing costs.
- Clamping modules can be mounted exactly where required, anywhere on the fixture plate. These modules fit perfectly on all of Carr Lane's 1/2" and 5/8" modular tooling plates and blocks, but can also be used with non-modular tooling.
- Clamping modules elevate the workpiece for machine-spindle clearance, and are stackable for extra height.



## Toggle Clamps

- Toggle clamps offer quick action, positive locking, compact size, and an exceptional ratio of holding force to application force.
- Toggle clamps operate using an over-center locking principle known as a "toggle action."
- In the clamping process, the action of the clamping handle moves the linkage to its center position and then snaps over the center point to lock the linkage.
- All Carr Lane Mfg. toggle clamp accessories are designed for use with CLM toggle clamps

Through Hole Screw Rest Button



## Captive Locating Screws with Hand Knob

- These Locating Screws feature an integral hand knob to allow for tightening by hand.
- Use these aerospace tooling components for locating and clamping or clamping alone by selecting the appropriate screw length.
- Captive Locating Screws with Hand Knobs are available in thread sizes from 1/4-20 to 1/2-13. Made in USA.

